

MSZ345

规格
Size $\phi 1 \sim \phi 12$



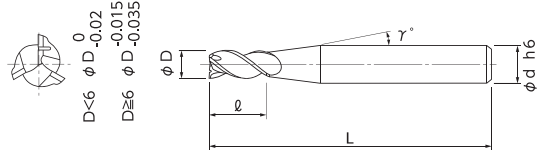
无限涂层 重切削高效率平底铣刀“Power Z”

共有14种规格
Total 14 sizes

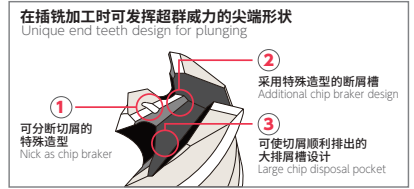
MUGEN COATING 3-Flute POWER “Z” End Mill

钢加工用 可无底孔、无停顿地进行插铣到沟槽加工的连续加工

For machining on steels Continuous machining from plunging without guide-hole and stepping to slotting



- 新开发的特殊刀刃形状，大幅提高了加工效率。
- 可应用于从插铣加工到沟槽加工的切削，实现前所未有的高效率！
- New flute design brought a remarkable shearing ability.
- High efficient machining is realized both for plunging cutting and slotting.



★ 返修对应（柄长须在15mm以上。详情请咨询本公司。）

单位 [规格:mm / 价格:日元]
Unit [Size : mm / Retail Price : JPY]

产品代码 Code No.	(D)外径 Dia.	(ℓ)刃长 Length of Cut	(γ)颈角 Neck Taper Angle	(d)柄径 Shank Dia.	(L)全长 Overall Length	定价(日元) Retail Price
08-00133-00100	1	1.5	9°	4	45	6,300
08-00133-00150	1.5	2.3	9°	4	45	6,300
08-00133-00200	2	3	9°	4	45	6,100
08-00133-00250	2.5	3.8	9°	4	45	6,100
★ 08-00133-00300	3	6	9°	6	50	7,600
★ 08-00133-00400	4	8	9°	6	50	7,900
★ 08-00133-00500	5	10	9°	6	50	8,500
★ 08-00133-00600	6	13	-	6	55	8,800
★ 08-00133-00700	7	16	9°	8	65	12,700
★ 08-00133-00800	8	19	-	8	65	12,700
★ 08-00133-00900	9	19	9°	10	75	14,700
★ 08-00133-01000	10	22	-	10	75	14,700
★ 08-00133-01100	11	22	9°	12	80	21,600
★ 08-00133-01200	12	26	-	12	80	21,600

订购方法
How to Order

请指定MSZ345 外径(D)。 ※(γ)为参考值。
When you order, indicate MSZ345 (D). ※(γ) is reference value.

- 碳素钢 P
Carbon Steel
- 合金钢 P
Alloy Steel
- 调质钢 P
Prehardened Steel

不锈钢 M
Stainless Steel

高效率加工
High Efficient
Milling