

SSPBL220

规格
Size R0.1 ~ R1

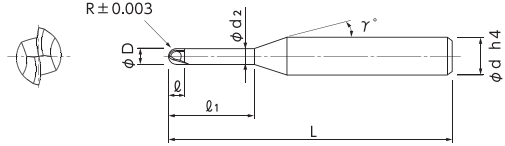


CBN超精加工用长颈螺旋球头铣刀

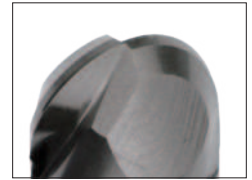
共有27种规格
Total 27 sizes

L/D最大10倍, 可实现具有光泽的精加工面

Realized glossy finished surface by maximum L/D=10



- 进一步延长了SSPB220的颈长, 规格实现了标准化。
- 采用兼具锋利度和耐崩刃性的螺旋球头形状以及较强的倒锥形状, 在发挥SSPB220特长的同时能够对应深沟精加工。
- Added longer under neck length type to SSPB220 series.
- Realized deeper milling by adoption of spiral ball shape and strong back taper shape to improve both sharpness and the chipping resistance of cutting edges.



刀刃形状
Cutting edge shape

★返修对应 (柄长须在15mm以上。详情请咨询本公司。)

单位 [规格: mm / 价格: 日元]
Unit [Size: mm / Retail Price: JPY]

产品代码 Code No.	(R)球头半径 Radius	(ℓ1)颈长 Under Neck Length	(ℓ)刃长 Length of Cut	(D)外径 Dia.	(d2)颈径 Neck Dia.	(γ)颈角 Neck Taper Angle	(d)柄径 Shank Dia.	(L)全长 Overall Length	定价(日元) Retail Price
01-00506-00101	R0.1	1	0.15	0.2	0.19	15°	4	50	33,000
01-00506-00151	R0.15	0.9	0.23	0.3	0.28	15°	4	50	31,500
01-00506-00152		1.5	0.23	0.3	0.28	15°	4	50	31,500
★ 01-00506-00201	R0.2	2	0.3	0.4	0.37	15°	4	50	30,000
★ 01-00506-00202		3	0.3	0.4	0.37	15°	4	52	30,000
★ 01-00506-00251	R0.25	1.5	0.38	0.5	0.46	15°	4	50	29,000
★ 01-00506-00252		2.5	0.38	0.5	0.46	15°	4	50	29,000
★ 01-00506-00253		3.5	0.38	0.5	0.46	15°	4	52	29,000
★ 01-00506-00301	R0.3	3	0.5	0.6	0.56	15°	4	50	28,000
★ 01-00506-00302		4	0.5	0.6	0.56	15°	4	53	28,000
★ 01-00506-00303		5	0.5	0.6	0.56	15°	4	53	28,500
★ 01-00506-00304		6	0.5	0.6	0.56	15°	4	53	28,500
★ 01-00506-00401	R0.4	4	0.6	0.8	0.76	15°	4	53	28,000
★ 01-00506-00402		6	0.6	0.8	0.76	15°	4	53	28,000
★ 01-00506-00501	R0.5	4	0.7	1	0.95	15°	4	51	28,000
★ 01-00506-00502		6	0.7	1	0.95	15°	4	53	28,000
★ 01-00506-00503		8	0.7	1	0.95	15°	4	53	28,500
★ 01-00506-00504		10	0.7	1	0.95	15°	4	53	28,500
★ 01-00506-00601	R0.6	6	0.8	1.2	1.15	15°	4	53	29,000
★ 01-00506-00751	R0.75	7.5	1	1.5	1.45	15°	4	52	29,000
★ 01-00506-00752		10	1	1.5	1.45	15°	4	52	29,000
★ 01-00506-00753		15	1	1.5	1.45	15°	4	52	29,000
★ 01-00506-01001	R1	6	1.2	2	1.94	15°	4	53	29,000
★ 01-00506-01002		8	1.2	2	1.94	15°	4	53	29,000
★ 01-00506-01003		10	1.2	2	1.94	15°	4	53	29,500
★ 01-00506-01004		14	1.2	2	1.94	15°	4	53	29,500
★ 01-00506-01005		20	1.2	2	1.94	15°	4	53	29,500

订购方法
How to Order

请指定SSPBL220 球头半径(R)×颈长(ℓ1)。
When you order, indicate SSPBL220 (R)×(ℓ1).

※(γ)为参考值。
※(γ) is reference value.

球头
Long Neck
Ball
无涂层
Non-Coating

高硬度钢~52
Hardened Steel HRC H

高硬度钢~60
Hardened Steel HRC H

高硬度钢~65
Hardened Steel HRC H

高硬度钢~70
Hardened Steel HRC H

CBN
核心系列
CBN
Core Line