

无限白金Plus涂层

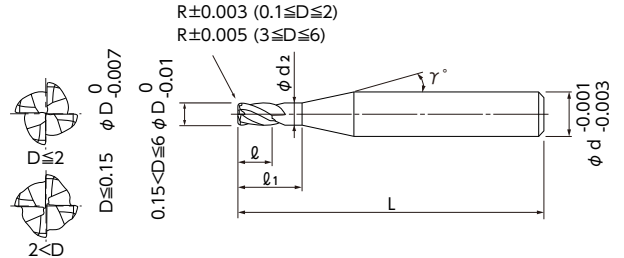
高硬度钢材 高精度加工用 4刃长颈圆鼻铣刀 可对应热缩刀柄的短柄造型

MUGEN COATING PREMIUM Plus 4-Flute Long Neck Corner Radius End Mill with short shank for Hardened Steel and High accuracy cutting

共 205 种规格

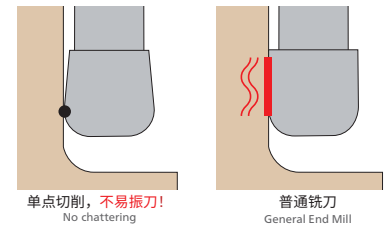
Total 205 sizes

规格增加到 $\phi 6$, 为了提升加工面粗度品质采用修光刃
与高精度R角设计可改善对于高硬度钢材的高精度精加工
Lineup extended up to $\phi 6$, combining specialized tool design and high accuracy corner R enhance finishing performance on hardened steels



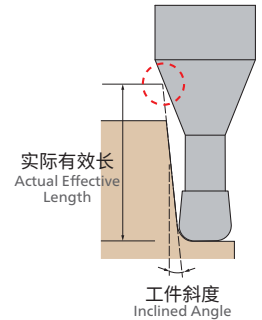
$\phi 0.1 \sim \phi 2$ 为底刃中心没有刃口。请留意此设计并注意加工余量。
Please be aware of stock since there is no cutting edge from the center to the bottom.

- 针对高硬度钢材用的无限白金 Plus 涂层配合强倒锥造型可实现稳定的刀具寿命并抑制振刀进而达到良好的精加工面。
- 可实现高效率加工的 4 刃造型。
- 4 刃刀具最小径从 $\phi 0.1 \sim \phi 6$, 共 205 种规格。
- MUGEN COATING PREMIUM Plus for hardened steels with strong back taper reduce chattering to realize long tool life and excellent finishing surface.
- 4-flute end mill for high efficiency machining.
- The smallest diameter of 4-flute end mills standardizes from $\phi 0.1$, total 131 sizes.



加工材料 Work Material

高硬度钢材 Hardened Steel		H
45~60HRC	60~70HRC	
○	◎	



单位 [规格: mm / 价格: 日元]
Unit [Size: mm / Retail Price: JPY]

产品代码 Code No.	(D) 外径 Dia.	(R) 角半径 Corner Radius	(l ₁) 颈长 Under Neck Length	(l) 刃长 Length of Cut	(d ₂) 颈径 Neck Dia.	(γ) 颈角 Neck Taper Angle	(d) 柄径 Shank Dia.	(L) 全长 Overall Length	定价 (日元) Retail Price	相对于工件斜度的有效长 Actual effective length depending on inclined angle of workpiece				
										30°	1°	1°30'	2°	3°
08-00239-01002	0.1	R0.01	0.2	0.08	0.085	15°	4	35	12,300	0.23	0.24	0.25	0.26	0.28
08-00239-01003			0.3	0.08	0.085	15°	4	35	12,300	0.33	0.35	0.36	0.37	0.4
08-00239-01503	0.15	R0.01	0.3	0.12	0.135	15°	4	35	12,300	0.33	0.35	0.36	0.37	0.4
08-00239-01505			0.5	0.12	0.135	15°	4	35	12,300	0.54	0.56	0.58	0.6	0.65
08-00239-01523		R0.02	0.3	0.12	0.135	15°	4	35	12,300	0.33	0.34	0.36	0.37	0.4
08-00239-01525			0.5	0.12	0.135	15°	4	35	12,300	0.54	0.56	0.58	0.6	0.65
08-00239-02203	0.2	R0.02	0.3	0.15	0.18	15°	4	35	12,300	0.34	0.35	0.37	0.38	0.41
08-00239-02205			0.5	0.15	0.18	15°	4	35	12,300	0.55	0.57	0.59	0.61	0.66
08-00239-02207			0.75	0.15	0.18	15°	4	35	12,300	0.81	0.84	0.87	0.9	0.97
08-00239-02210			1	0.15	0.18	15°	4	35	12,300	1.07	1.1	1.14	1.18	1.28
08-00239-02403		R0.05	0.3	0.15	0.18	15°	4	35	12,300	0.34	0.35	0.36	0.38	0.4
08-00239-02405			0.5	0.15	0.18	15°	4	35	12,300	0.55	0.57	0.59	0.61	0.65
08-00239-02407			0.75	0.15	0.18	15°	4	35	12,300	0.81	0.83	0.86	0.89	0.96
08-00239-02410			1	0.15	0.18	15°	4	35	12,300	1.07	1.1	1.14	1.18	1.27
08-00239-03205	0.3	R0.02	0.5	0.25	0.28	15°	4	35	12,300	0.55	0.57	0.59	0.61	0.66
08-00239-03207			0.75	0.25	0.28	15°	4	35	12,300	0.81	0.84	0.87	0.9	0.97
08-00239-03210			1	0.25	0.28	15°	4	35	12,300	1.07	1.1	1.14	1.18	1.28
08-00239-03215			1.5	0.25	0.28	15°	4	35	12,300	1.58	1.64	1.7	1.76	1.9
08-00239-03405		R0.05	0.5	0.25	0.28	15°	4	35	12,300	0.55	0.57	0.59	0.61	0.65
08-00239-03407			0.75	0.25	0.28	15°	4	35	12,300	0.81	0.83	0.86	0.89	0.96
08-00239-03410			1	0.25	0.28	15°	4	35	12,300	1.07	1.1	1.14	1.18	1.27
08-00239-03415			1.5	0.25	0.28	15°	4	35	12,300	1.58	1.64	1.69	1.76	1.89

订购方法
How to Order

请指定MHRSH430RSF 外径(D)×角半径(R)×颈长(l₁)
When you order, indicate MHRSH430RSF (D)×(R)×(l₁).

※(γ)为参考值。
※(γ) is reference value.

单位 [规格 : mm / 价格 : 日元]
Unit [Size : mm / Retail Price : JPY]

产品代码 Code No.	(D)外径 Dia.	(R)角半径 Corner Radius	(L1)颈长 Under Neck Length	(L)刃长 Length of Cut	(d2)颈径 Neck Dia.	(γ)颈角 Neck Taper Angle	(d)柄径 Shank Dia.	(L)全长 Overall Length	定价(日元) Retail Price	相对于工件斜度的有效长 Actual effective length depending on inclined angle of workpiece					
										30°	1°	1°30'	2°	3°	
08-00239-04205	0.4	R0.02	0.5	0.3	0.37	15°	4	35	7,900	0.57	0.59	0.61	0.63	0.68	
08-00239-04210			1	0.3	0.37	15°	4	35	7,900	1.09	1.12	1.16	1.21	1.3	
08-00239-04215			1.5	0.3	0.37	15°	4	35	7,900	1.6	1.66	1.72	1.78	1.92	
08-00239-04220			2	0.3	0.37	15°	4	35	7,900	2.12	2.19	2.27	2.36	2.55	
08-00239-04405		R0.05	0.5	0.3	0.37	15°	4	35	7,900	0.57	0.59	0.61	0.63	0.67	
08-00239-04410			1	0.3	0.37	15°	4	35	7,900	1.08	1.12	1.16	1.2	1.3	
08-00239-04415			1.5	0.3	0.37	15°	4	35	7,900	1.6	1.66	1.71	1.78	1.92	
08-00239-04420			2	0.3	0.37	15°	4	35	7,900	2.12	2.19	2.27	2.35	2.54	
08-00239-05210	0.5	R0.02	1	0.4	0.46	15°	4	35	6,400	1.11	1.14	1.18	1.23	1.33	
08-00239-05215			1.5	0.4	0.46	15°	4	35	6,400	1.62	1.68	1.74	1.8	1.95	
08-00239-05220			2	0.4	0.46	15°	4	35	6,400	2.14	2.21	2.29	2.38	2.57	
08-00239-05225			2.5	0.4	0.46	15°	4	35	6,400	2.66	2.75	2.85	2.95	3.19	
08-00239-05410		R0.05	1	0.4	0.46	15°	4	35	6,400	1.1	1.14	1.18	1.22	1.32	
08-00239-05415			1.5	0.4	0.46	15°	4	35	6,400	1.62	1.68	1.73	1.8	1.94	
08-00239-05420			2	0.4	0.46	15°	4	35	6,400	2.14	2.21	2.29	2.37	2.56	
08-00239-05425			2.5	0.4	0.46	15°	4	35	6,400	2.65	2.75	2.84	2.95	3.18	
08-00239-05510		R0.1	1	0.4	0.46	15°	4	35	6,400	1.1	1.14	1.18	1.22	1.31	
08-00239-05515			1.5	0.4	0.46	15°	4	35	6,400	1.62	1.67	1.73	1.79	1.93	
08-00239-05520			2	0.4	0.46	15°	4	35	6,400	2.14	2.21	2.28	2.37	2.55	
08-00239-05525			2.5	0.4	0.46	15°	4	35	6,400	2.65	2.74	2.84	2.94	3.17	
08-00239-06210	0.6	R0.02	1	0.5	0.56	15°	4	35	6,400	1.11	1.14	1.18	1.23	1.33	
08-00239-06220			2	0.5	0.56	15°	4	35	6,400	2.14	2.21	2.29	2.38	2.57	
08-00239-06230			3	0.5	0.56	15°	4	35	6,400	3.17	3.28	3.4	3.53	3.81	
08-00239-06410		R0.05	1	0.5	0.56	15°	4	35	6,400	1.1	1.14	1.18	1.22	1.32	
08-00239-06420			2	0.5	0.56	15°	4	35	6,400	2.14	2.21	2.29	2.37	2.56	
08-00239-06430			3	0.5	0.56	15°	4	35	6,400	3.17	3.28	3.4	3.52	3.81	
08-00239-06510		R0.1	1	0.5	0.56	15°	4	35	6,400	1.1	1.14	1.18	1.22	1.31	
08-00239-06520			2	0.5	0.56	15°	4	35	6,400	2.14	2.21	2.28	2.37	2.55	
08-00239-06530			3	0.5	0.56	15°	4	35	6,400	3.17	3.28	3.39	3.52	3.79	
08-00239-08202		0.8	R0.02	2	0.65	0.76	15°	4	35	7,100	2.14	2.21	2.29	2.38	2.57
08-00239-08203				3	0.65	0.76	15°	4	35	7,100	3.17	3.28	3.4	3.53	3.81
08-00239-08204				4	0.65	0.76	15°	4	35	7,100	4.21	4.35	4.51	4.68	5.06
08-00239-08402	R0.05		2	0.65	0.76	15°	4	35	7,100	2.14	2.21	2.29	2.37	2.56	
08-00239-08403			3	0.65	0.76	15°	4	35	7,100	3.17	3.28	3.4	3.52	3.81	
08-00239-08404			4	0.65	0.76	15°	4	35	7,100	4.21	4.35	4.51	4.67	5.05	
08-00239-08502	R0.1		2	0.65	0.76	15°	4	35	7,100	2.14	2.21	2.28	2.37	2.55	
08-00239-08503			3	0.65	0.76	15°	4	35	7,100	3.17	3.28	3.39	3.52	3.79	
08-00239-08504			4	0.65	0.76	15°	4	35	7,100	4.2	4.35	4.5	4.67	5.04	
08-00239-08602			R0.2	2	0.65	0.76	15°	4	35	7,100	2.13	2.2	2.27	2.35	2.53
08-00239-08603	3			0.65	0.76	15°	4	35	7,100	3.17	3.27	3.38	3.5	3.77	
08-00239-08604	4			0.65	0.76	15°	4	35	7,100	4.2	4.34	4.49	4.65	5.01	
08-00239-10202	1		R0.02	2	0.8	0.95	15°	4	35	6,500	2.16	2.23	2.31	2.4	2.59
08-00239-10203				3	0.8	0.95	15°	4	35	6,500	3.19	3.3	3.42	3.55	3.84
08-00239-10204				4	0.8	0.95	15°	4	35	6,500	4.23	4.37	4.53	4.7	5.08
08-00239-10205				5	0.8	0.95	15°	4	40	6,500	5.26	5.44	5.64	5.85	6.32
08-00239-10402		R0.05	2	0.8	0.95	15°	4	35	6,500	2.16	2.23	2.31	2.39	2.59	
08-00239-10403			3	0.8	0.95	15°	4	35	6,500	3.19	3.3	3.42	3.54	3.83	
08-00239-10404			4	0.8	0.95	15°	4	35	6,500	4.22	4.37	4.53	4.69	5.07	
08-00239-10405			5	0.8	0.95	15°	4	40	6,500	5.26	5.44	5.63	5.84	6.31	
08-00239-10502		R0.1	2	0.8	0.95	15°	4	35	6,500	2.16	2.23	2.3	2.39	2.57	
08-00239-10503			3	0.8	0.95	15°	4	35	6,500	3.19	3.3	3.41	3.54	3.82	
08-00239-10504			4	0.8	0.95	15°	4	35	6,500	4.22	4.37	4.52	4.69	5.06	
08-00239-10505			5	0.8	0.95	15°	4	40	6,500	5.26	5.44	5.63	5.84	6.3	
08-00239-10602		R0.2	2	0.8	0.95	15°	4	35	6,500	2.15	2.22	2.29	2.37	2.55	
08-00239-10603			3	0.8	0.95	15°	4	35	6,500	3.19	3.29	3.4	3.52	3.79	
08-00239-10604			4	0.8	0.95	15°	4	35	6,500	4.22	4.36	4.51	4.67	5.04	
08-00239-10605			5	0.8	0.95	15°	4	40	6,500	5.25	5.43	5.62	5.82	6.28	

MHRSH430RSF

New

增加规格
Size Expansion

无限白金Plus涂层

高硬度钢材 高精度加工用 4刃长颈圆鼻铣刀 可对应热缩刀柄的短柄造型

MUGEN COATING PREMIUM Plus 4-Flute Long Neck Corner Radius End Mill with short shank for Hardened Steel and High accuracy cutting

单位 [规格 : mm / 价格 : 日元]

Unit [Size : mm / Retail Price : JPY]

产品代码 Code No.	(D) 外径 Dia.	(R) 角半径 Corner Radius	(L1) 颈长 Under Neck Length	(L) 刃长 Length of Cut	(d2) 颈径 Neck Dia.	(γ) 颈角 Neck Taper Angle	(d) 柄径 Shank Dia.	(L) 全长 Overall Length	定价(日元) Retail Price	相对于工件斜度的有效长 Actual effective length depending on inclined angle of workpiece					
										30°	1°	1°30'	2°	3°	
08-00239-10702	1	R0.3	2	0.8	0.95	15°	4	35	6,500	2.15	2.21	2.28	2.36	2.53	
08-00239-10703			3	0.8	0.95	15°	4	35	6,500	3.18	3.28	3.39	3.51	3.77	
08-00239-10704			4	0.8	0.95	15°	4	35	6,500	4.22	4.35	4.5	4.66	5.01	
08-00239-10705			5	0.8	0.95	15°	4	40	6,500	5.25	5.42	5.61	5.81	6.26	
08-00239-15203	1.5	R0.02	3	1.2	1.43	15°	4	35	6,800	3.23	3.34	3.46	3.59	3.88	
08-00239-15204			4	1.2	1.43	15°	4	35	6,800	4.26	4.41	4.57	4.74	5.13	
08-00239-15206			6	1.2	1.43	15°	4	40	6,800	6.33	6.55	6.79	7.04	7.61	
08-00239-15208			8	1.2	1.43	15°	4	40	7,200	8.4	8.69	9	9.34	10.1	
08-00239-15403		R0.05	3	1.2	1.43	15°	4	35	6,800	3.23	3.34	3.46	3.59	3.87	
08-00239-15404			4	1.2	1.43	15°	4	35	6,800	4.26	4.41	4.57	4.74	5.12	
08-00239-15406			6	1.2	1.43	15°	4	40	6,800	6.33	6.55	6.78	7.04	7.6	
08-00239-15408			8	1.2	1.43	15°	4	40	7,200	8.4	8.69	9	9.34	10.09	
08-00239-15503		R0.1	3	1.2	1.43	15°	4	35	6,800	3.23	3.34	3.45	3.58	3.86	
08-00239-15504			4	1.2	1.43	15°	4	35	6,800	4.26	4.41	4.56	4.73	5.11	
08-00239-15506			6	1.2	1.43	15°	4	40	6,800	6.33	6.55	6.78	7.03	7.59	
08-00239-15508			8	1.2	1.43	15°	4	40	7,200	8.4	8.69	9	9.33	10.08	
08-00239-15603			R0.2	3	1.2	1.43	15°	4	35	6,800	3.22	3.33	3.44	3.57	3.84
08-00239-15604				4	1.2	1.43	15°	4	35	6,800	4.26	4.4	4.55	4.72	5.08
08-00239-15606				6	1.2	1.43	15°	4	40	6,800	6.33	6.54	6.77	7.01	7.57
08-00239-15608				8	1.2	1.43	15°	4	40	7,200	8.39	8.68	8.98	9.31	10.06
08-00239-15703	R0.3		3	1.2	1.43	15°	4	35	6,800	3.22	3.32	3.43	3.55	3.82	
08-00239-15704			4	1.2	1.43	15°	4	35	6,800	4.25	4.39	4.54	4.7	5.06	
08-00239-15706			6	1.2	1.43	15°	4	40	6,800	6.32	6.53	6.76	7	7.55	
08-00239-15708			8	1.2	1.43	15°	4	40	7,200	8.39	8.67	8.97	9.3	10.03	
08-00239-15803	R0.5	3	1.2	1.43	15°	4	35	6,800	3.21	3.31	3.41	3.52	3.77		
08-00239-15804		4	1.2	1.43	15°	4	35	6,800	4.25	4.38	4.52	4.67	5.01		
08-00239-15806		6	1.2	1.43	15°	4	40	6,800	6.32	6.52	6.74	6.97	7.5		
08-00239-15808		8	1.2	1.43	15°	4	40	7,200	8.38	8.66	8.95	9.27	9.98		
08-00239-20204	2	R0.02	4	1.6	1.91	15°	4	35	6,800	4.3	4.45	4.61	4.78	5.17	
08-00239-20206			6	1.6	1.91	15°	4	35	6,800	6.37	6.59	6.83	7.08	7.66	
08-00239-20208			8	1.6	1.91	15°	4	40	7,200	8.44	8.73	9.05	9.38	10.14	
08-00239-20210			10	1.6	1.91	15°	4	40	7,200	10.5	10.87	11.26	11.68	12.63	
08-00239-20404		R0.05	4	1.6	1.91	15°	4	35	6,800	4.3	4.45	4.61	4.78	5.16	
08-00239-20406			6	1.6	1.91	15°	4	35	6,800	6.37	6.59	6.83	7.08	7.65	
08-00239-20408			8	1.6	1.91	15°	4	40	7,200	8.44	8.73	9.04	9.38	10.14	
08-00239-20410			10	1.6	1.91	15°	4	40	7,200	10.5	10.87	11.26	11.68	12.62	
08-00239-20504		R0.1	4	1.6	1.91	15°	4	35	6,800	4.3	4.45	4.6	4.77	5.15	
08-00239-20506			6	1.6	1.91	15°	4	35	6,800	6.37	6.59	6.82	7.07	7.64	
08-00239-20508			8	1.6	1.91	15°	4	40	7,200	8.43	8.73	9.04	9.37	10.13	
08-00239-20510			10	1.6	1.91	15°	4	40	7,200	10.5	10.86	11.25	11.67	12.61	
08-00239-20604		R0.2	4	1.6	1.91	15°	4	35	6,800	4.3	4.44	4.59	4.76	5.13	
08-00239-20606			6	1.6	1.91	15°	4	35	6,800	6.36	6.58	6.81	7.06	7.62	
08-00239-20608			8	1.6	1.91	15°	4	40	7,200	8.43	8.72	9.03	9.36	10.1	
08-00239-20610			10	1.6	1.91	15°	4	40	7,200	10.5	10.86	11.24	11.66	12.59	
08-00239-20704	R0.3	4	1.6	1.91	15°	4	35	6,800	4.29	4.43	4.58	4.74	5.11		
08-00239-20706		6	1.6	1.91	15°	4	35	6,800	6.36	6.57	6.8	7.04	7.59		
08-00239-20708		8	1.6	1.91	15°	4	40	7,200	8.43	8.71	9.02	9.34	10.08		
08-00239-20710		10	1.6	1.91	15°	4	40	7,200	10.5	10.85	11.23	11.64	12.56		
08-00239-20804	R0.5	4	1.6	1.91	15°	4	35	6,800	4.29	4.42	4.56	4.71	5.06		
08-00239-20806		6	1.6	1.91	15°	4	35	6,800	6.35	6.56	6.78	7.01	7.54		
08-00239-20808		8	1.6	1.91	15°	4	40	7,200	8.42	8.7	8.99	9.31	10.03		
08-00239-20810		10	1.6	1.91	15°	4	40	7,200	10.49	10.84	11.21	11.61	12.52		

订购方法
How to Order

请指定MHRSH430RSF 外径(D)×角半径(R)×颈长(L1)
When you order, indicate MHRSH430RSF (D)×(R)×(L1).

※(γ)为参考值。
※(γ) is reference value.

单位 [规格 : mm / 价格 : 日元]
Unit [Size : mm / Retail Price : JPY]

产品代码 Code No.	(D) 外径 Dia.	(R) 角半径 Corner Radius	(d1) 颈长 Under Neck Length	(L) 刃长 Length of Cut	(d2) 颈径 Neck Dia.	(γ) 颈角 Neck Taper Angle	(d) 柄径 Shank Dia.	(L) 全长 Overall Length	定价(日元) Retail Price	相对于工件斜度的有效长 Actual effective length depending on inclined angle of workpiece					
										30°	1°	1°30'	2°	3°	
◆ 08-00239-30404	3	R0.05	4	2.5	2.85	15°	6	45	7,900	4.42	4.57	4.73	4.91	5.30	
◆ 08-00239-30406			6	2.5	2.85	15°	6	45	7,900	6.48	6.71	6.95	7.21	7.79	
◆ 08-00239-30408			8	2.5	2.85	15°	6	45	7,900	8.55	8.85	9.17	9.51	10.28	
◆ 08-00239-30410			10	2.5	2.85	15°	6	50	8,800	10.62	10.99	11.38	11.81	12.76	
◆ 08-00239-30412			12	2.5	2.85	15°	6	50	8,800	12.69	13.13	13.60	14.11	15.25	
◆ 08-00239-30415			15	2.5	2.85	15°	6	55	9,700	15.79	16.34	16.92	17.56	18.98	
◆ 08-00239-30504		R0.1	4	2.5	2.85	15°	6	45	7,900	4.42	4.57	4.73	4.90	5.29	
◆ 08-00239-30506			6	2.5	2.85	15°	6	45	7,900	6.48	6.71	6.94	7.20	7.78	
◆ 08-00239-30508			8	2.5	2.85	15°	6	45	7,900	8.55	8.84	9.16	9.50	10.26	
◆ 08-00239-30510			10	2.5	2.85	15°	6	50	8,800	10.62	10.98	11.38	11.80	12.75	
◆ 08-00239-30512			12	2.5	2.85	15°	6	50	8,800	12.68	13.12	13.59	14.10	15.24	
◆ 08-00239-30515			15	2.5	2.85	15°	6	55	9,700	15.79	16.33	16.92	17.55	18.97	
◆ 08-00239-30604		R0.2	4	2.5	2.85	15°	6	45	7,900	4.41	4.56	4.72	4.89	5.27	
◆ 08-00239-30606			6	2.5	2.85	15°	6	45	7,900	6.48	6.70	6.93	7.19	7.75	
◆ 08-00239-30608			8	2.5	2.85	15°	6	45	7,900	8.55	8.84	9.15	9.49	10.24	
◆ 08-00239-30610			10	2.5	2.85	15°	6	50	8,800	10.61	10.98	11.37	11.79	12.73	
◆ 08-00239-30612			12	2.5	2.85	15°	6	50	8,800	12.68	13.12	13.58	14.09	15.21	
◆ 08-00239-30615			15	2.5	2.85	15°	6	55	9,700	15.78	16.33	16.91	17.54	18.94	
◆ 08-00239-30704		R0.3	4	2.5	2.85	15°	6	45	7,900	4.41	4.55	4.71	4.87	5.24	
◆ 08-00239-30706			6	2.5	2.85	15°	6	45	7,900	6.48	6.69	6.92	7.17	7.73	
◆ 08-00239-30708			8	2.5	2.85	15°	6	45	7,900	8.54	8.83	9.14	9.47	10.22	
◆ 08-00239-30710			10	2.5	2.85	15°	6	50	8,800	10.61	10.97	11.36	11.77	12.70	
◆ 08-00239-30712			12	2.5	2.85	15°	6	50	8,800	12.68	13.11	13.57	14.07	15.19	
◆ 08-00239-30715			15	2.5	2.85	15°	6	55	9,700	15.78	16.32	16.90	17.52	18.92	
◆ 08-00239-30804		R0.5	4	2.5	2.85	15°	6	45	7,900	4.40	4.54	4.69	4.84	5.20	
◆ 08-00239-30806			6	2.5	2.85	15°	6	45	7,900	6.47	6.68	6.90	7.14	7.68	
◆ 08-00239-30808			8	2.5	2.85	15°	6	45	7,900	8.54	8.82	9.12	9.44	10.17	
◆ 08-00239-30810			10	2.5	2.85	15°	6	50	8,800	10.60	10.96	11.33	11.74	12.66	
◆ 08-00239-30812			12	2.5	2.85	15°	6	50	8,800	12.67	13.10	13.55	14.04	15.14	
◆ 08-00239-30815			15	2.5	2.85	15°	6	55	9,700	15.77	16.31	16.88	17.49	18.87	
◆ 08-00239-40508	4	R0.1	8	3.2	3.8	15°	6	45	10,800	8.65	8.94	9.26	9.61	10.38	
◆ 08-00239-40512			12	3.2	3.8	15°	6	50	10,800	12.78	13.22	13.70	14.21	15.35	
◆ 08-00239-40516			16	3.2	3.8	15°	6	55	10,800	16.92	17.50	18.13	18.81	Free	
◆ 08-00239-40520			20	3.2	3.8	15°	6	55	12,100	21.05	21.78	22.56	23.41	Free	
◆ 08-00239-40608		R0.2	8	3.2	3.8	15°	6	45	10,800	8.64	8.94	9.25	9.59	10.36	
◆ 08-00239-40612			12	3.2	3.8	15°	6	50	10,800	12.78	13.22	13.69	14.19	15.33	
◆ 08-00239-40616			16	3.2	3.8	15°	6	55	10,800	16.91	17.50	18.12	18.79	Free	
◆ 08-00239-40620			20	3.2	3.8	15°	6	55	12,100	21.05	21.77	22.55	23.39	Free	
◆ 08-00239-40708		R0.3	8	3.2	3.8	15°	6	45	10,800	8.64	8.93	9.24	9.58	10.33	
◆ 08-00239-40712			12	3.2	3.8	15°	6	50	10,800	12.77	13.21	13.68	14.18	15.31	
◆ 08-00239-40716			16	3.2	3.8	15°	6	55	10,800	16.91	17.49	18.11	18.78	Free	
◆ 08-00239-40720			20	3.2	3.8	15°	6	55	12,100	21.04	21.77	22.54	23.38	Free	
◆ 08-00239-40808		R0.5	8	3.2	3.8	15°	6	45	10,800	8.63	8.92	9.22	9.55	10.29	
◆ 08-00239-40812			12	3.2	3.8	15°	6	50	10,800	12.77	13.20	13.65	14.15	15.26	
◆ 08-00239-40816			16	3.2	3.8	15°	6	55	10,800	16.90	17.47	18.09	18.75	Free	
◆ 08-00239-40820			20	3.2	3.8	15°	6	55	12,100	21.04	21.75	22.52	23.35	Free	
◆ 08-00239-50515		5	R0.1	15	4	4.75	15°	6	50	15,200	15.98	16.53	17.13	Free	Free
◆ 08-00239-50520				20	4	4.75	15°	6	55	15,200	21.15	21.88	Free	Free	Free
◆ 08-00239-50615			R0.2	15	4	4.75	15°	6	50	15,200	15.98	16.53	17.12	Free	Free
◆ 08-00239-50620				20	4	4.75	15°	6	55	15,200	21.14	21.87	Free	Free	Free
◆ 08-00239-50715	R0.3		15	4	4.75	15°	6	50	15,200	15.97	16.52	17.10	Free	Free	
◆ 08-00239-50720			20	4	4.75	15°	6	55	15,200	21.14	21.87	Free	Free	Free	
◆ 08-00239-50815	R0.5		15	4	4.75	15°	6	50	15,200	15.97	16.50	17.08	Free	Free	
◆ 08-00239-50820			20	4	4.75	15°	6	55	15,200	21.13	21.85	Free	Free	Free	

MHRSH430RSF

New

增加规格
Size Expansion

无限白金Plus涂层

高硬度钢材 高精度加工用 4刃长颈圆鼻铣刀 可对应热缩刀柄的短柄造型

MUGEN COATING PREMIUM Plus 4-Flute Long Neck Corner Radius End Mill with short shank for Hardened Steel and High accuracy cutting

单位 [规格: mm / 价格: 日元]
Unit [Size: mm / Retail Price: JPY]

产品代码 Code No.	(D) 外径 Dia.	(R) 角半径 Corner Radius	(L1) 颈长 Under Neck Length	(L) 刃长 Length of Cut	(d2) 颈径 Neck Dia.	(γ) 颈角 Neck Taper Angle	(d) 柄径 Shank Dia.	(L) 全长 Overall Length	定价(日元) Retail Price	相对于工件斜度的有效长 Actual effective length depending on inclined angle of workpiece				
										30'	1°	1°30'	2°	3°
◆ 08-00239-60512	6	R0.1	12	5	5.7	-	6	45	11,000	Free	Free	Free	Free	Free
◆ 08-00239-60518			18	5	5.7	-	6	50	13,600	Free	Free	Free	Free	Free
◆ 08-00239-60524			24	5	5.7	-	6	60	13,600	Free	Free	Free	Free	Free
◆ 08-00239-60530			30	5	5.7	-	6	65	13,600	Free	Free	Free	Free	Free
◆ 08-00239-60612		R0.2	12	5	5.7	-	6	45	11,000	Free	Free	Free	Free	Free
◆ 08-00239-60618			18	5	5.7	-	6	50	13,600	Free	Free	Free	Free	Free
◆ 08-00239-60624			24	5	5.7	-	6	60	13,600	Free	Free	Free	Free	Free
◆ 08-00239-60630			30	5	5.7	-	6	65	13,600	Free	Free	Free	Free	Free
◆ 08-00239-60712		R0.3	12	5	5.7	-	6	45	11,000	Free	Free	Free	Free	Free
◆ 08-00239-60718			18	5	5.7	-	6	50	13,600	Free	Free	Free	Free	Free
◆ 08-00239-60724			24	5	5.7	-	6	60	13,600	Free	Free	Free	Free	Free
◆ 08-00239-60730			30	5	5.7	-	6	65	13,600	Free	Free	Free	Free	Free
◆ 08-00239-60812		R0.5	12	5	5.7	-	6	45	11,000	Free	Free	Free	Free	Free
◆ 08-00239-60818			18	5	5.7	-	6	50	13,600	Free	Free	Free	Free	Free
◆ 08-00239-60824			24	5	5.7	-	6	60	13,600	Free	Free	Free	Free	Free
◆ 08-00239-60830			30	5	5.7	-	6	65	13,600	Free	Free	Free	Free	Free
◆ 08-00239-60912		R1	12	5	5.7	-	6	45	11,000	Free	Free	Free	Free	Free
◆ 08-00239-60918			18	5	5.7	-	6	50	13,600	Free	Free	Free	Free	Free
◆ 08-00239-60924			24	5	5.7	-	6	60	13,600	Free	Free	Free	Free	Free
◆ 08-00239-60930			30	5	5.7	-	6	65	13,600	Free	Free	Free	Free	Free

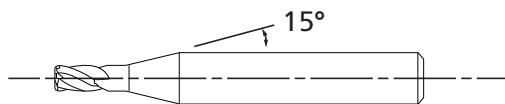
订购方法
How to Order

请指定MHRSH430RSF 外径(D) × 角半径(R) × 颈长(L1)
When you order, indicate MHRSH430RSF (D) × (R) × (L1).

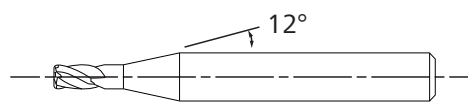
※(γ)为参考值。
※(γ) is reference value.

MHRSH430RSF 颈角 (γ) 为 15°。我公司其他产品也有颈角 (γ) 12° 的产品。

Neck taper angle (γ) of MHRSH430RSF is 15°. Our other products have a neck taper angle (γ) of 12°.



MHRSH430RSF



我公司其他产品也有颈角 (γ) 12° 的产品
Our other products have a neck taper angle (γ) of 12°